

TITLE OF WORK

by

First Name, Last Name

[Thesis/Dissertation/Project/Extended Essays] submitted in partial fulfillment of the requirements for the degree of

[MASTER OF.../DOCTOR OF ...]

in

[CONCENTRATION]

UNIVERSITY OF PUERTO RICO

MAYAGÜEZ CAMPUS

[YEAR]

Approved by:

Firstname Lastname, degree
President, Graduate Committee

Date

Firstname Lastname, degree
Member, Graduate Committee

Date

Firstname Lastname, degree
Member, Graduate Committee

Date

Firstname Lastname, degree
Member, Graduate Committee

Date

Firstname Lastname, degree
Representative of Graduate Studies

Date

Firstname Lastname, degree
Chairperson of the Department

Date

ABSTRACT

Abstract paragraphs should be unindented: use the style **Body_Prelim**.

Master's abstracts are limited to 150 words; doctoral abstracts are limited to 350 words.

The use of keywords is optional, they may be placed below the abstract or on the next page.

You may include up to 5 keywords or phrases per language. Separate keywords with semicolons.

Keywords: UPRM template; thesis template; dissertation template; Microsoft Word

RESUMEN

El resumen es la traducción del *Abstract*. Use el estilo **Body_Prelim**. Para cambiar el lenguaje en esta sección, selecciónela con el cursor y escoja **Tools>Language> Spanish**.

Palabras clave: plantilla de UPRM; plantilla tesis; plantilla disertación; plantilla de Microsoft Word

Copyright (year) by (Name of Copyright Owner)

All Rights Reserved

Include your dedication here. This is optional, if you choose to not include a dedication delete this section. You can use the paragraph style of your liking.

Aquí puede incluir su dedicación. Esto es opcional, si no desea incluirla puede borrar esta sección. Si desea puede utilizar el estilo de párrafo de su selección.

ACKNOWLEDGMENTS

This section is optional. Remember to acknowledge the correct institutions for any grants or seed money received.

TABLE OF CONTENTS

LIST OF TABLES.....	VII
LIST OF FIGURES.....	VIII
GLOSSARY OF TERMS.....	IX
LIST OF APPENDICES.....	X
CHAPTER 1 INTRODUCTION.....	11
CHAPTER 2 LITERATURE REVIEW.....	12
2.1 [SUBHEADING LEVEL 2].....	12
CHAPTER 3 METHODOLOGY.....	13
3.1 [SUBHEADING LEVEL 2].....	13
3.2 [SUBHEADING LEVEL 2].....	14
CHAPTER 4 RESULTS.....	15
4.1 [SUBHEADING LEVEL 2].....	15
4.1.1 [Subheading level 3].....	15
4.1.1.1 [Subheading Level 4].....	15
CHAPTER 5 CONCLUSION.....	17
REFERENCES.....	18

LIST OF TABLES

Table 4.1 Example of a table.....	15
Table 4.2 Example of landscape table.....	16

LIST OF FIGURES

Figure 3.1 Example of a figure.....	14
-------------------------------------	----

GLOSSARY OF TERMS

A	flow area
a, b	coefficients in the radar rain rate equation
AMS	Annual Maximum Series
ArcGIS	Arc Geographical Information Systems
ASCII	data file in text format
Bias	bias
C	Celsius

LIST OF APPENDICES

APPENDIX A	19
------------------	----

Chapter 1 Introduction

This template's purpose is to help ease the process of redacting your thesis/dissertation. Working with this template can save you time and will help you create a professional looking thesis with the least amount of formatting mistakes. We recommend you use the show editing symbols as this facilitates editing your work, select the ¶ symbol in the Home ribbon.

The template also includes a *Table of Contents*, *List of Tables*, *List of Figures*, and *List of Appendices* that can be updated in a second! Just **right-click** anywhere and select **Update fields>Update Entire Table**. Remember to use **Help** on the **Word® Menu** if you have questions.

It is also suggested that academic works be written in English to reach a wider audience. Remember that sentences in English are often shorter than in Spanish, **so do not translate directly**. To change the language on Microsoft Word choose **Tools>Language...>English(US)**. If you need any assistance with writing your thesis in English, you can contact the Graduate Writing Facilitators (GWFs). For more information on the services that the GWFs provide visit <https://libguides.uprm.edu/writingclinics>.

To cross reference a figure, table, equation, etc. in your text, choose **Insert>Cross-reference...** and on "*Reference Type*" choose **Figure**, **Table**, or **Equation**. Then on "*Insert Reference to:*" choose **only Label and Number**. To update ALL fields within the document do **control-A** (**command-A** for **mac**), then **right-click** and **Update Field**.

. We wish you success!

Chapter 2 Literature Review

Remember to use the correct styles when writing. To do so click on the desired style on the **Home** ribbon. Lorem ipsum dolor sit amet, consectetur adipiscing elit. Nam dignissim dui purus. Quisque non lobortis ex, et sollicitudin risus. Praesent odio metus, ornare vel sapien sed, efficitur sagittis dui. Morbi suscipit orci ex, vel bibendum erat lacinia nec. Ut orci nibh, fringilla nec erat ac, cursus porttitor sapien.

2.1 [Subheading Level 2]

Lorem ipsum dolor sit amet, consectetur adipiscing elit. Nam dignissim dui purus. Quisque non lobortis ex, et sollicitudin risus. Praesent odio metus, ornare vel sapien sed, efficitur sagittis dui. Morbi suscipit orci ex, vel bibendum erat lacinia nec. Ut orci nibh, fringilla nec erat ac, cursus porttitor sapien.

Curabitur eu quam at quam tempus dapibus in ac metus. Donec vulputate elit sem, ac varius diam sagittis eget. Phasellus commodo ornare consequat. Integer porttitor eros quis vehicula aliquet. Etiam tempor, purus ut porttitor scelerisque, felis lacus porttitor ante, ornare ultricies diam mauris et risus. Donec aliquet, enim non tincidunt lacinia, massa sapien finibus mauris, eu fringilla leo turpis quis ante.

Duis rhoncus leo in nisi euismod, eu malesuada erat facilisis. Interdum et malesuada fames ac ante ipsum primis in faucibus. Suspendisse nec magna at dui consectetur congue. Nunc malesuada bibendum nisi vel vehicula. Sed libero nulla, viverra eu nulla nec, scelerisque euismod lectus. Nullam eget bibendum sapien, in euismod enim. Curabitur dui turpis, ultrices in commodo id, ornare eu sapien. Nulla pharetra nunc elit, sit amet ultricies nibh condimentum at.

Chapter 3 Methodology

Lorem ipsum dolor sit amet, consectetur adipiscing elit. Nam dignissim dui purus. Quisque non lobortis ex, et sollicitudin risus. Praesent odio metus, ornare vel sapien sed, efficitur sagittis dui. Morbi suscipit orci ex, vel bibendum erat lacinia nec. Ut orci nibh, fringilla nec erat ac, cursus porttitor sapien. Curabitur accumsan auctor justo.

3.1 [Subheading Level 2]

Lorem ipsum dolor sit amet, consectetur adipiscing elit. Nam dignissim dui purus. Quisque non lobortis ex, et sollicitudin risus. Praesent odio metus, ornare vel sapien sed, efficitur sagittis dui. Morbi suscipit orci ex, vel bibendum erat lacinia nec. Ut orci nibh, fringilla nec erat ac, cursus porttitor sapien. Curabitur accumsan auctor justo.

Lorem ipsum dolor sit amet, consectetur adipiscing elit. Nam dignissim dui purus. Quisque non lobortis ex, et sollicitudin risus. Praesent odio metus, ornare vel sapien sed, efficitur sagittis dui. Morbi suscipit orci ex, vel bibendum erat lacinia nec. Ut orci nibh, fringilla nec erat ac, cursus porttitor sapien. Curabitur accumsan auctor justo.

This is an example of an equation:

Equation 3.1
$$A = \pi r^2$$

This is an example of cross referencing an equation, see Equation 3.1 Lorem ipsum dolor sit amet, consectetur adipiscing elit. Nam dignissim dui purus. Quisque non lobortis ex, et sollicitudin risus. Praesent odio metus, ornare vel sapien sed, efficitur sagittis dui. Morbi suscipit orci ex, vel bibendum erat lacinia nec. Ut orci nibh, fringilla nec erat ac, cursus porttitor sapien. Curabitur accumsan auctor justo.

3.2 [Subheading Level 2]

Lorem ipsum dolor sit amet, consectetur adipiscing elit. Nam dignissim dui purus. Quisque non lobortis ex, et sollicitudin risus. Praesent odio metus, ornare vel sapien sed, efficitur sagittis dui. Morbi suscipit orci ex, vel bibendum erat lacinia nec. Ut orci nibh, fringilla nec erat ac, cursus porttitor sapien. Curabitur accumsan auctor justo.

This is an example of a cross referenced image, see Figure 3.1.

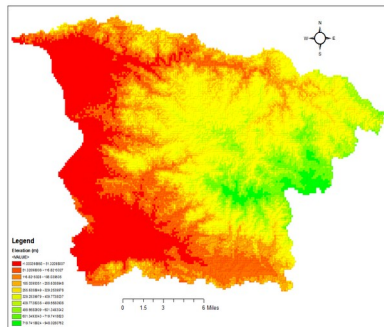


Figure 3.1 Example of a figure.

Chapter 4 Results

Lorem ipsum dolor sit amet, consectetur adipiscing elit. Nam dignissim dui purus. Quisque non lobortis ex, et sollicitudin risus. Praesent odio metus, ornare vel sapien sed, efficitur sagittis dui. Morbi suscipit orci ex, vel bibendum erat lacinia nec.

4.1 [Subheading Level 2]

This is an example of a table, see Table 4.1.

Table 4.1 Example of a table

	<i>West</i>	<i>East</i>	<i>North</i>	<i>South</i>
<i>Count</i>	1	7	0	32

4.1.1 [Subheading level 3]

Lorem ipsum dolor sit amet, consectetur adipiscing elit. Nam dignissim dui purus. Quisque non lobortis ex, et sollicitudin risus. Praesent odio metus, ornare vel sapien sed, efficitur sagittis dui. Morbi suscipit orci ex, vel bibendum erat lacinia nec. Ut orci nibh, fringilla nec erat ac, cursus porttitor sapien. Curabitur accumsan auctor justo.

4.1.1.1 [Subheading Level 4]

Lorem ipsum dolor sit amet, consectetur adipiscing elit. Nam dignissim dui purus. Quisque non lobortis ex, et sollicitudin risus. Praesent odio metus, ornare vel sapien sed, efficitur sagittis dui. Morbi suscipit orci ex, vel bibendum erat lacinia nec. Ut orci nibh, fringilla nec erat ac, cursus porttitor sapien. Curabitur accumsan auctor justo.

Lorem ipsum dolor sit amet, consectetur adipiscing elit. Nam dignissim dui purus. Quisque non lobortis ex, et sollicitudin risus. Praesent odio metus, ornare vel sapien sed, efficitur sagittis dui. Morbi suscipit orci ex, vel bibendum erat lacinia nec. Ut orci nibh, fringilla nec erat ac, cursus porttitor sapien. Curabitur accumsan auctor justo.

This is an example of a table on landscape orientation. You can do this with any table you wish. Just add section breaks before and after the table by using **Layout** > Breaks. Use a *Next Page Section Break* before the desired content and a *Continuous Section Break* after. Then select the content and change the page orientation to landscape using **Layout** > Orientation > Landscape.

Table 4.2 Example of landscape table

<i>Locations</i>	<i>Májim</i>	<i>Isla Cueva</i>	<i>Desecheo</i>	<i>Mona</i>	<i>Caja de Muertos</i>	<i>Gilligans</i>	<i>Vieques</i>	<i>Culebra</i>	<i>Palomino</i>
<i>Visited</i>	Yes	Yes	Yes	No	Yes	Yes	Yes	No	no
<i>Samples collected</i>	19	12	17	0	18	22	20	0	0

Chapter 5 Conclusion

Lorem ipsum dolor sit amet, consectetur adipiscing elit. Nam dignissim dui purus. Quisque non lobortis ex, et sollicitudin risus. Praesent odio metus, ornare vel sapien sed, efficitur sagittis dui. Morbi suscipit orci ex, vel bibendum erat lacinia nec. Ut orci nibh, fringilla nec erat ac, cursus porttitor sapien. Curabitur accumsan auctor justo. Vivamus finibus odio mauris, ut lobortis mauris mollis sed.

Curabitur eu quam at quam tempus dapibus in ac metus. Donec vulputate elit sem, ac varius diam sagittis eget. Phasellus commodo ornare consequat. Integer porttitor eros quis vehicula aliquet. Etiam tempor, purus ut porttitor scelerisque, felis lacus porttitor ante, ornare ultricies diam mauris et risus. Donec aliquet, enim non tincidunt lacinia, massa sapien finibus mauris, eu fringilla leo turpis quis ante. Vestibulum velit nulla, eleifend a elit semper, rhoncus elementum justo. Orci varius natoque penatibus et magnis dis parturient montes, nascetur ridiculus mus.

Duis rhoncus leo in nisi euismod, eu malesuada erat facilisis. Interdum et malesuada fames ac ante ipsum primis in faucibus. Suspendisse nec magna at dui consectetur congue. Nunc malesuada bibendum nisi vel vehicula. Sed libero nulla, viverra eu nulla nec, scelerisque euismod lectus. Nullam eget bibendum sapien, in euismod enim. Curabitur dui turpis, ultrices in commodo id, ornare eu sapien. Nulla pharetra nunc elit, sit amet ultricies nibh condimentum at.

REFERENCES

It is highly recommended that you use a reference manager. This will reduce mistakes while creating citations and the bibliography. It is also a great way to save time.

APPENDIX A

Lorem ipsum dolor sit amet, consectetur adipiscing elit. Nam dignissim dui purus. Quisque non lobortis ex, et sollicitudin risus. Praesent odio metus, ornare vel sapien sed, efficitur sagittis dui. Morbi suscipit orci ex, vel bibendum erat lacinia nec. Ut orci nibh, fringilla nec erat ac, cursus porttitor sapien. Curabitur accumsan auctor justo. Vivamus finibus odio mauris, ut lobortis mauris mollis sed.

Curabitur eu quam at quam tempus dapibus in ac metus. Donec vulputate elit sem, ac varius diam sagittis eget. Phasellus commodo ornare consequat. Integer porttitor eros quis vehicula aliquet. Etiam tempor, purus ut porttitor scelerisque, felis lacus porttitor ante, ornare ultricies diam mauris et risus. Donec aliquet, enim non tincidunt lacinia, massa sapien finibus mauris, eu fringilla leo turpis quis ante. Vestibulum velit nulla, eleifend a elit semper, rhoncus elementum justo. Orci varius natoque penatibus et magnis dis parturient montes, nascetur ridiculus mus.

Duis rhoncus leo in nisi euismod, eu malesuada erat facilisis. Interdum et malesuada fames ac ante ipsum primis in faucibus. Suspendisse nec magna at dui consectetur congue. Nunc malesuada bibendum nisi vel vehicula. Sed libero nulla, viverra eu nulla nec, scelerisque euismod lectus. Nullam eget bibendum sapien, in euismod enim. Curabitur dui turpis, ultrices in commodo id, ornare eu sapien. Nulla pharetra nunc elit, sit amet ultricies nibh condimentum at.

APPENDIX B

Lorem ipsum dolor sit amet, consectetur adipiscing elit. Nam dignissim dui purus. Quisque non lobortis ex, et sollicitudin risus. Praesent odio metus, ornare vel sapien sed, efficitur sagittis dui. Morbi suscipit orci ex, vel bibendum erat lacinia nec. Ut orci nibh, fringilla nec erat ac, cursus porttitor sapien. Curabitur accumsan auctor justo. Vivamus finibus odio mauris, ut lobortis mauris mollis sed.

Curabitur eu quam at quam tempus dapibus in ac metus. Donec vulputate elit sem, ac varius diam sagittis eget. Phasellus commodo ornare consequat. Integer porttitor eros quis vehicula aliquet. Etiam tempor, purus ut porttitor scelerisque, felis lacus porttitor ante, ornare ultricies diam mauris et risus. Donec aliquet, enim non tincidunt lacinia, massa sapien finibus mauris, eu fringilla leo turpis quis ante. Vestibulum velit nulla, eleifend a elit semper, rhoncus elementum justo. Orci varius natoque penatibus et magnis dis parturient montes, nascetur ridiculus mus.

Duis rhoncus leo in nisi euismod, eu malesuada erat facilisis. Interdum et malesuada fames ac ante ipsum primis in faucibus. Suspendisse nec magna at dui consectetur congue. Nunc malesuada bibendum nisi vel vehicula. Sed libero nulla, viverra eu nulla nec, scelerisque euismod lectus. Nullam eget bibendum sapien, in euismod enim. Curabitur dui turpis, ultrices in commodo id, ornare eu sapien. Nulla pharetra nunc elit, sit amet ultricies nibh condimentum at.

APPENDIX C

Lorem ipsum dolor sit amet, consectetur adipiscing elit. Nam dignissim dui purus. Quisque non lobortis ex, et sollicitudin risus. Praesent odio metus, ornare vel sapien sed, efficitur sagittis dui. Morbi suscipit orci ex, vel bibendum erat lacinia nec. Ut orci nibh, fringilla nec erat ac, cursus porttitor sapien. Curabitur accumsan auctor justo. Vivamus finibus odio mauris, ut lobortis mauris mollis sed.

Curabitur eu quam at quam tempus dapibus in ac metus. Donec vulputate elit sem, ac varius diam sagittis eget. Phasellus commodo ornare consequat. Integer porttitor eros quis vehicula aliquet. Etiam tempor, purus ut porttitor scelerisque, felis lacus porttitor ante, ornare ultricies diam mauris et risus. Donec aliquet, enim non tincidunt lacinia, massa sapien finibus mauris, eu fringilla leo turpis quis ante. Vestibulum velit nulla, eleifend a elit semper, rhoncus elementum justo. Orci varius natoque penatibus et magnis dis parturient montes, nascetur ridiculus mus.

Duis rhoncus leo in nisi euismod, eu malesuada erat facilisis. Interdum et malesuada fames ac ante ipsum primis in faucibus. Suspendisse nec magna at dui consectetur congue. Nunc malesuada bibendum nisi vel vehicula. Sed libero nulla, viverra eu nulla nec, scelerisque euismod lectus. Nullam eget bibendum sapien, in euismod enim. Curabitur dui turpis, ultrices in commodo id, ornare eu sapien. Nulla pharetra nunc elit, sit amet ultricies nibh condimentum at.